

1



2



3



4-Door Panels



5a-Countertops
Front



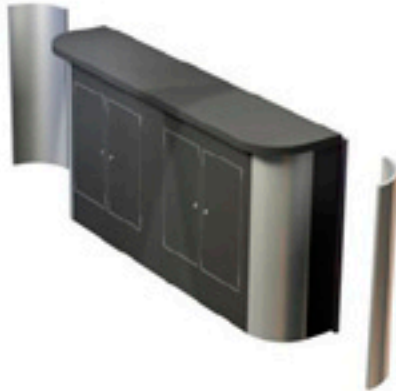
5b-Countertops
Back



Enhancing Corporate Images in 3-Dimensions

800-773-9442 www.m2mds.com

6-Counter Wings



7-Back Panels



8-Side Curves



9-Header



9-Header



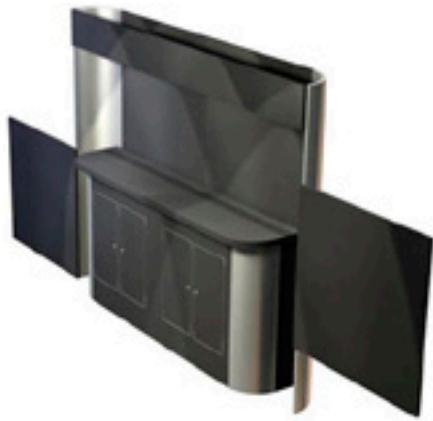
10-Back Panel



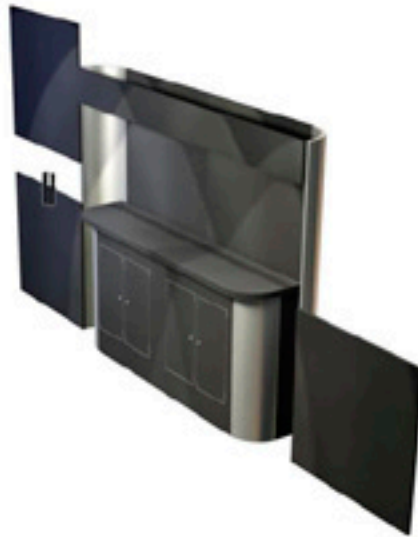
Enhancing Corporate Images in 3-Dimensions

800-773-9442 www.m2mds.com

10a-Back Panel



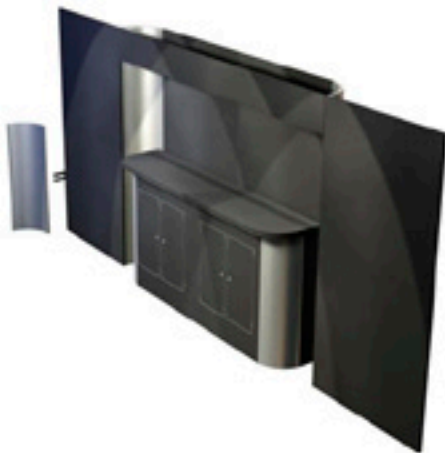
10b-Back Panel



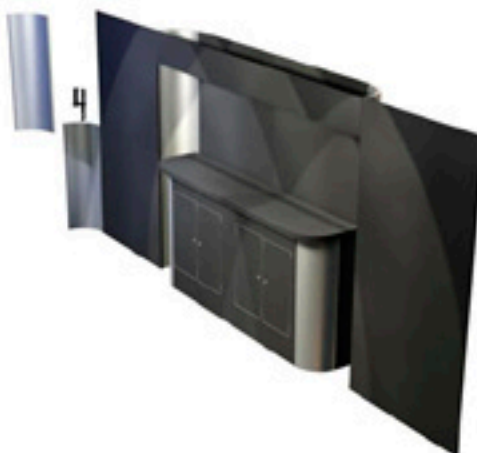
10c-Back Panel



11-Side Curve Panel



11a-Side Curve Panel



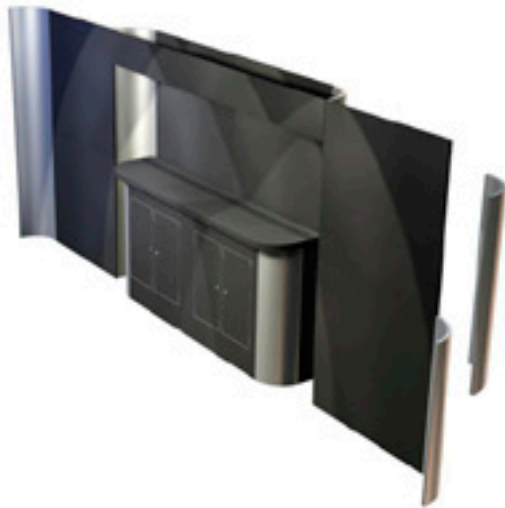
11b-Side Curve Panel



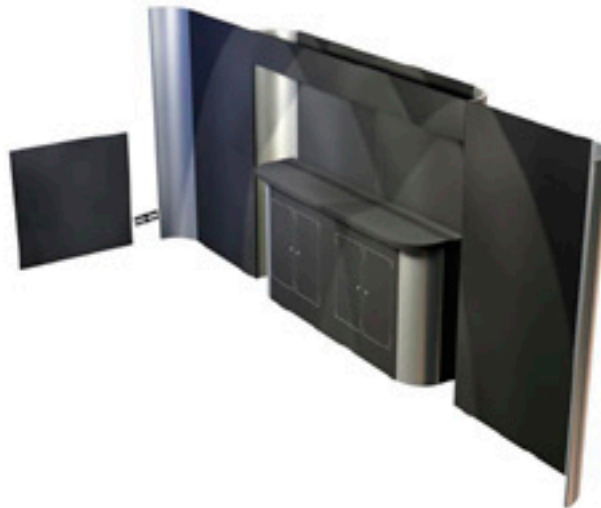
Enhancing Corporate Images in 3-Dimensions

800-773-9442 www.m2mds.com

11c-Side Curve Panel



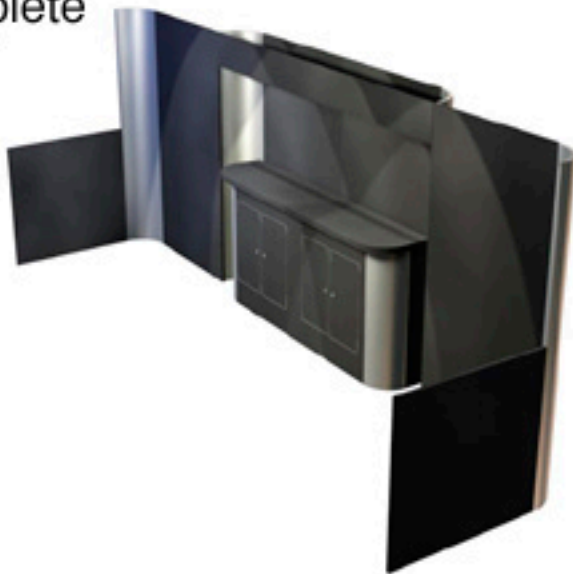
12-Side Rail



12a-Side Rail



13-Complete



The standard 10' x 20':

Dimensions : 60" long x 44" wide x 60" high

Shipping Weight : 382 lbs

Electric Requirements : 15 Amps (single phase 110 volts)

Installation Labor Requirements : 2 Man-hours

The above information is based on a prototype. Exhibits may vary based on client specifications. The above product information does not include the following: labor for the plasma television and carpet installation as well as dismantle; shipping dimensions or weights for the plasma television, its shipper, carpet, carpet pad, and furniture.